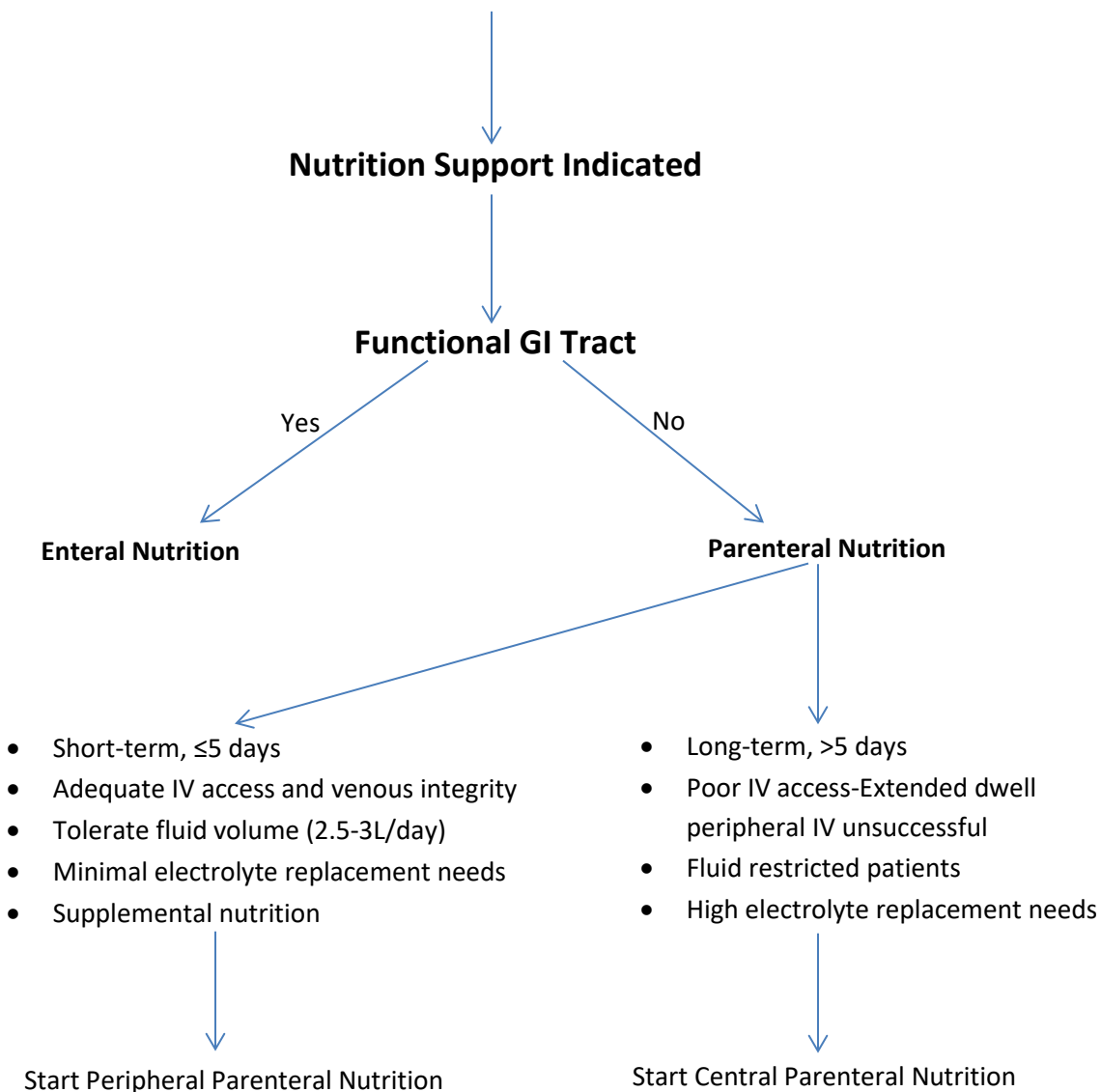




## Routes to Deliver Nutrition Support to Adults:

### Clinical Decision Algorithm

- Within 24-48 hours for patients with moderate or severe malnutrition if oral intake is insufficient
- Within 3-5 days for patients nutritionally-at-risk and unlikely to achieve adequate oral intake
- $\geq 7$  days for well-nourished, stable adult patients who have been unable to meet  $\geq 50\%$  estimated needs



Reference: Worthington P, Balint J, Bechtold M, et al. When Is Parenteral Nutrition Appropriate? *JPEN J Parenter Enteral Nutr.* 2017;41(3):324-377.